

TUBE AXIAL FAN

CNC Products Finishing Systems tube axial fans are perfect for commercial/industrial intake and exhaust purposes. We have a wide range of sizes and options to match your specific needs. CNC's in house laser cutting, custom forming and powder coating equipment guarantees our fans meet exacting standards and we control the production and fabrication process from beginning to end. 14-gauge housing roll formed in house, Belt driven, non-sparking poly propylene blade, in-house heavy-duty powder coat finish (custom colors available upon request), 3/16 flange. Single phase and 3-phase motors available.

TUBE AXIAL FAN

- Single & 3 Phase Motors Available
- Non-Sparking Polypropylene Blade
- Heavy Duty Pillow Block Bearings
- In House Laser Cut 14 ga Steel Housing
- Precision Roll Formed in House
- Heavy Duty Powder Coated
- Motor Ships Separately
Customer Mounted
- One Year Warranty
- Custom Powder Coat
Colors Available



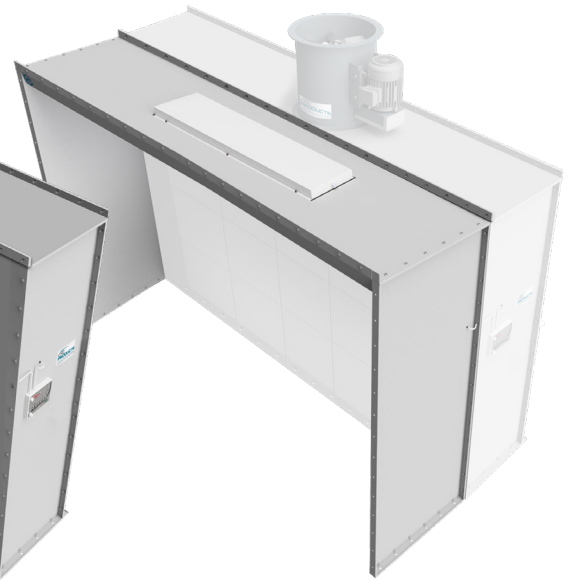
OTHER PAINT PRODUCTS ALSO AVAILABLE



**Belt Driven Tube
Axial Fans**



**Exhaust Paint
Walls**



**Open Face
Paint Booths**

To see the full line of products, visit
our website: CNCProductsInc.com